



WALLACEA
DIVE CRUISES

MSY SEAHORSE - RAJA AMPAT - BANDA SEA
11 NIGHTS CRUISE

RAJA AMPAT - BANDA SEA

DEPARTURE PORT: AMBON / ARRIVAL PORT: SORONG

This 12 days / 11 nights multi destination trip combines some of the most iconic dive spots of the Banda Sea and Raja Ampat. It offers outstanding diving and is a perfect itinerary for encounters with the Schooling hammerhead sharks that roam the Banda Sea during this season.

A minimum of 33 dives (3 dives per day) is offered during the trip, including at least 5 night dives.

Our adventure begins in Ambon and ends in Sorong.

We organize your pick and drop off at the airport or at your hotel in those cities.





THE DIVING:

The Banda Sea is one of the best Indonesian dive destinations. It offers a great variety of dive sites among beautiful tiny islands and large reefs. Many of the dive sites are steep drop off with impressive hard corals, huge sponges of all kinds, pastel black corals bushes and an intense fish life. Tunas, Spanish mackerel, giant trevallies schools of trevallies and barracudas and other pelagic fish are part of the show, together with the occurrence of the hammerheads, either in small groups or in big shoals. Other type of dive sites includes great critters dives -especially in the bay of Ambon- and beautiful fringing reefs.



The hammerheads are in the Banda Sea from September to end November. Their presence is related to the upwellings that cool the upper layers of the Banda sea. Those upwellings themselves depends on the SE winds that occur in Indonesia from June to September. Therefore the best chances to see the Hammerheads is when the water is the coolest, Mid-September to Mid-October. But the September rich nutrients cold waters also means more turbid waters due to plankton, and eventually remaining winds for the S.E. monsoon creating a choppy sea. The more we get off September, the more chances to get a flat sea and good visibility is high, but also the chances to see the schooling hammerheads diminishes.



Misool in the south of Raja Ampat is among the hottest spot of Indonesian diving. The abundance of sea life, both fixed fauna such as corals and gorgonians along the lush reef, as well as the stunning quantity and diversity of fish swimming above is just astonishing. It is also heaven for macro lovers! The dive sites underwater topographies are also varied and interesting, filled with dramatic pinnacles, long ridges, walls, hidden caves, rock formations, azure lagoons and much more.

SNORKELING:

Our trips are open to snorkelers. Most of the dive sites offer great snorkeling opportunities with a lot to see in shallow waters, and we offer specific guidance for snorkelers.



ACTIVITIES:

Banda islands were at the centre of the spices trades during the XVI century. They were the original Spice Islands and the most coveted destination on earth, particularly by the Dutch and Portuguese who colonized the islands and exported the indigenous nutmeg and cloves. We will stop on the island of Banda Neira and visit the village, the fort and the museum for a glimpse of the Banda history.

We will also visit some other small villages on the islands.

In Misool, we will visit the ranger's station and snorkel in front of their beach in a natural shark nursery where small black tips are swimming around in one meter of crystal clear water. A short trek to the view point of the "love lagoon" (a lagoon in shape of a hearth!) will be offered. We may also visit a cave near Farondi.

The guests are always welcome to use the dinghies (with a boatman) to go on shore at any time, as long as the schedule allows it.

Our complementary kayaks are also available to go on shore or in the lagoons whenever the boat is anchored





WEATHER

End September marks the end of the South east monsoon, but we may experience some remaining SE winds. As we are very close to the equator, a few showers are always probable.

VISIBILITY

Banda Sea: Good to excellent

Misool: Average to good

TEMPERATURE

The sea temperature will be 26° to 28°C (80 to 84°F)

CURRENTS

On this itinerary the currents are generally moderate on most of the dive sites, but yes there will be some consistent currents in some occasions. Wallacea Dive Cruises has a long experience diving these dive sites and always pays attention to dive in the right places at the right time to avoid difficult or dangerous currents. Before each dive, our guides conduct current checks so that our briefings will always inform you about the up-to-the-minute diving conditions.





ITINERARY & NAVIGATION :

Banda Sea

After a night of navigation, we will start the cruise at Nusa Laut for the first day. We will navigate again overnight to reach Suangi, a hot spot for Hammerheads sharks and following our dives we navigate to The Banda Islands. The diving around those islands is very rewarding. One of the highlights is a dive along the lava flow of the "Gunung Api" (the fire mountain); the last eruption was in 1988 and we can see how the corals and huge sponges did grow back since then. We will stop in Banda Neira for a land visit.



Overnight navigation to Manuk island, a small volcanic island, where a lot of seabirds come for nesting. Underwater the sulphur traces of volcanic activity can be seen. The diving signature is the abundance of sea snakes, both *Aipysurus* sp and *Laticauda*. Hammerheads are also roaming around, but generally only individuals or small groups. We then navigate back up north towards Hatta.

Hatta is also a place known for the hammerheads and much more. After the third dive, we start our crossing navigation to Koon. All night navigation.

Koon is part of a small group of islands between the Banda Sea and The south of Raja Ampat, it is a fantastic spot to transit towards Misool. 2 rewarding dives on a spectacular dive site called "too many fishes wall" and a full night of navigation to reach Misool.



Raja Ampat

Misool is among the hottest spots of Indonesian diving. The abundance of sea life, both fixed fauna such as corals and gorgonians along the lush reef, as well as the stunning quantity and diversity of fish swimming above is just astonishing. The dive sites underwater topographies are also varied and interesting, filled with dramatic pinnacles, long ridges, walls, hidden caves, rock formations, azure lagoons and much more. We spend four days in the area then navigate during the night to Sorong.





Sorong

WEST PAPUA

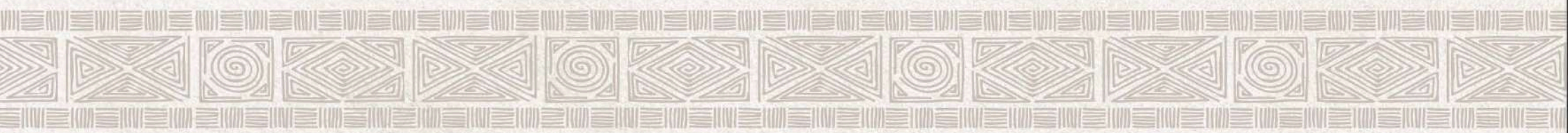
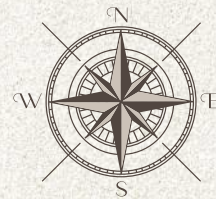
Wayil Balbulol
Daram
Fiabacet

CERAM SEA

SERAM

Ambon
Nusa Laut
Koon
Banda Neira
Manuk

BANDA SEA



DIVE ORGANISATION ON MSY SEAHORSE

- Due to the large number of dives performed during the trip and the remoteness of the location, we urge divers to stay within no-deco limits, to not exceed a maximum depth of 35 meters, and to perform a safety stop at the end of every dive.
 - Depending on the guests' dive experience, interests (photography, macro, etc), and use of Nitrox (free for certified divers), the Cruise Director will arrange the diving groups. These groups are made of up to four divers maximum and a dive guide. The dive guides are rotating on a daily basis. Each diver is given a dive tank (DIN & INT available, no need for adapters) and their own dive station for the duration of the cruise.
 - A briefing will be conducted by the Cruise Director or one of the guides before each dive. It will describe the site topography, depths, currents, and potential hazards, as well as the marine life we expect to encounter.
 - The staff carries your tank between the MSY SEAHORSE and the dinghies. Onboard the dinghies, the tanks are placed into slots and the guide will help you to gear up just before you back-roll into the water.
 - Identification books of flora and local fauna are available on board, and the dive guides will always help you identify the animals you have seen during the dives.
 - Some dive equipment are available for rent on board. However, all sizes are not necessarily available, so please book it prior to the cruise.
- * Our cruises are open to divers with a Padi Advanced Open Water or equivalent with at least 30 logged dives. Less experienced divers can also participate with special supervision that needs to be arranged before the cruise.
- * Insurance covering medical evacuation and diving accidents is highly recommended. Divers will be filling out a statement of medical fitness for dive activities onboard.





THE BOAT:

MSY SEAHORSE is a phinisi wooden boat of 33m x 8.5m built in 2004 and refurbished in 2018, for smooth navigation with focus on spaciousness and convenience for diving activities. With its 2 aluminium dinghies, comfortable dive deck and camera room, the boat is suitable for avid and pro divers, UW photographers & videographers. Kayaks are also available on board.

THE CABINS:

There are 8 comfortable cabins on board, all equipped with individually-controlled air-conditioning. Each cabin has a private bathroom with hot shower and ample storage for personal belongings. Every bathroom has a toilet and shower, with ample water pressure for everyone!

There are 2 sea view cabins with double bed (upper deck 13.5 m²), 1 cabin with a double bed (lower deck 12 m²), and 5 cabins with twin beds (lower deck 12 m²).



COMMON AREAS:

MSY SEAHORSE is designed to make guests comfortable during long trips with a spacious outdoor lounge on the upper deck. There are plenty of space where guests can mingle and socialize under the shade, but also enough space for them to relax on their own to read their books or take a nap outdoor.

There is a smoking area at the back of the upper deck where guests can also get to know the crew. The spacious air-conditioned restaurant on the main deck with meals served on the table, family style and is equipped with a TV in the middle of the room. The restaurant includes a bar.





SERVICE:

Behind the MSY SEAHORSE's success, there is a professional, discreet, smiling, and very friendly crew. Our team will treat you with special attention, assist you with whatever you need, and of course carry your tank & gear. Most of our crew have been working with us for many years.

THE CUISINE:

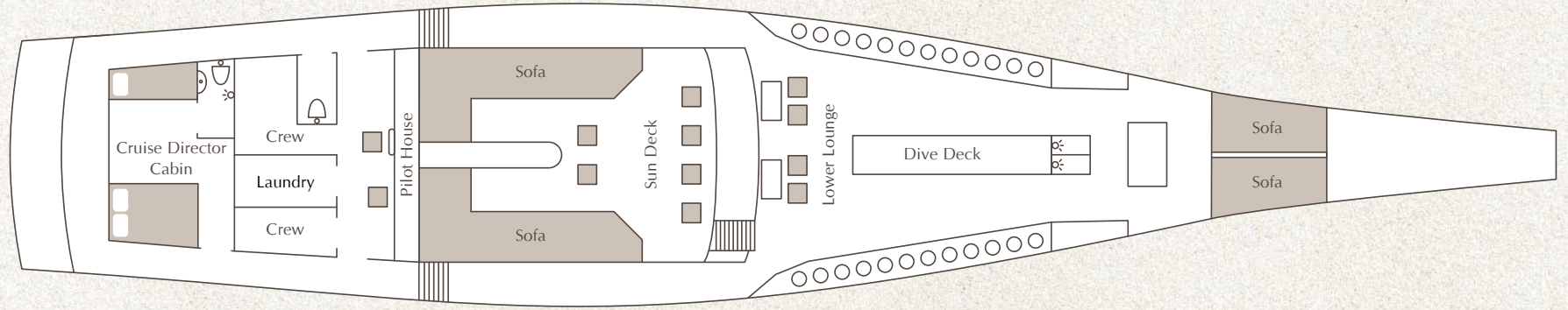
Mixing eastern and western specialties, our cuisine is a "fusion" of the best of both that will never let you go hungry. Should you have specific requests, or a particular dietary need, (vegetarian or allergy, for example), our chefs will adapt the meals for your greatest pleasure.

THE TEAM AT YOUR SERVICE:

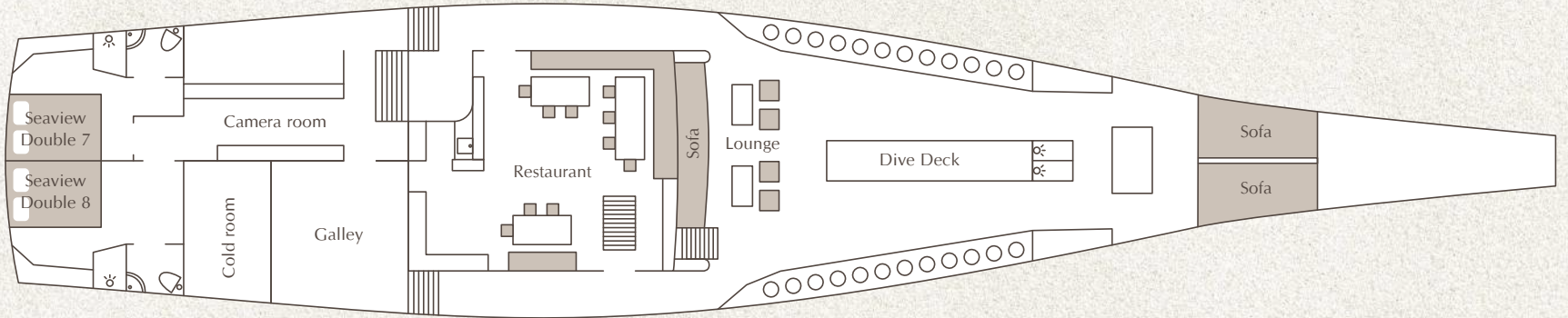
- 1 cruise director / diving instructor
- 16 crew members including 4 dive guides



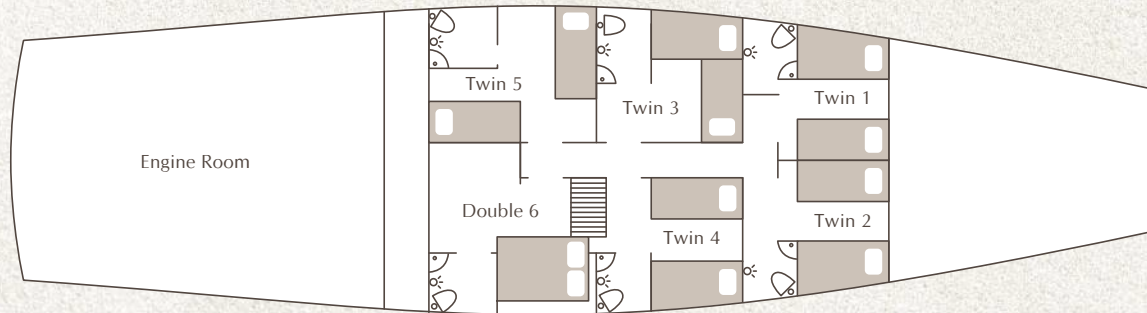
UPPER DECK



MAIN DECK



LOWER DECK



THE CRUISE RATE INCLUDES:

- Transfers between the boat and the closest airport
- Accommodation in a shared twin or double bed cabin
- All meals & snacks, drinking water, soft drinks and hot drinks
- All guided dives (1 guide /4 divers maximum)
- Aluminium tank (12 liters), weights, and belts
- Free Nitrox

PAYMENTS ON BOARD:

All payments on board have to be done in cash, we cannot receive payment by credit card. All major currencies are accepted (€, USD, AUS, CHF, IDR). However, prepayment by wire transfer can be arranged. Please see hereunder what you are mandatory to pay on board and eventual extra costs.

- Parc and port fees: 250€ / pax
- Fuel surcharge: 150€ / pax
- Tips: tipping should reflect your level of satisfaction with the service on board. The usual amount in the industry is 10% or more of the cruise rate.

EXTRAS PRICE LIST:

- Beer 33 cl 4€
- Laundry 1€ / pc
- Massage (45 mn) 30€
- Wines & Spirits 40€ to 60€ / bottle

DOESN'T INCLUDE:

- Park & port fees, fuel surcharge.
- International and domestic flights
- Alcoholic beverages (you can bring your own)
- Diving equipment rental, 100 cf (15 L) tank (see price list)
- Crew gratuities
- Massages
- Laundry

DIVING EQUIPMENT RENTAL:

- Regulator, BCD, Dive computer 10€ / day each item
- Fins, Diving Mask 5€ / day each item
- Surcharge for 100cf / 15 lt tank 75€
- Wetsuit 10€ / day
- Torch 8€ / day





VISAS & USEFUL INFORMATION

Most countries are eligible for a 30 days visa on arrival (VOA) for IDR 500 000 (or the equivalent in € or USD) payable in cash at the airport. This visa can be extended once inside the country for an additional 30 days. You can pre-register and pay online beforehand to avoid waiting on arrival. List of countries eligible for VOA & application for VOA registration & payment here:www.idnonline.vfsevisa.id

A 60 days visa can be requested, type B211A. Wallacea Dive Cruise can arrange it for you.

YOUR PASSPORT MUST HAVE A 6 MONTHS VALIDITY AT LEAST FROM THE DATE YOU WILL EXIT INDONESIA.

- Universal electrical sockets (EU, USA, AUS, UK, CN)
- Camera Room for charging and assembly of cameras and accessory devices with many outlets.
- Towels are provided: bath towel (cleaned and replaced every 3 days) and a “deck/ beach” towel. After each dive a warm towel will be available for each guest on the dive deck. The cabin bathroom is furnished with a hair dryer, organic liquid soap and shampoo as well as toothpaste.
- 2 complimentary Kayaks are available on board.
- WIFI is available on board through our GSM modem. However, depending on the trip area, the GSM coverage may be not permanent.



PRACTICAL INFORMATION

BOAT DEPARTURE		BOAT ARRIVAL	
Port	Ambon	Port	Sorong
Airport	Pattimura (AMQ)	Airport	Sorong (SOQ)
Check in time	Before 12:00 noon	Check out time	Before 12:00 noon
Boat departure time	1:00 PM	Boat arrival time	6:00 AM
First dive	No dive on the arrival day	Last dive	Penultimate day, 8 AM

How to get there:

Recommended international airport: Jakarta

To Ambon: through Jakarta . Jakarta -Ambon with Batik Air.

From Saumlaki to Jakarta. Wings Air to Ambon then Batik Air Ambon-Jakarta.

NB: See hereunder about airlines and luggage allowance. Domestic flights can be checked and bought on the web site / application tiket.com or traveloka.com/en-id

Good to know:

- Most of the airlines include for free 20 kgs of luggage.
- Garuda includes on top of the 20 kgs an additional free 23 kgs for sports equipment, diving gear falling into this category.
- WINGS AIR doesn't include any baggage, the fees vary depending on the flight. However if you are booked with a Batik Air connecting flight, you are allowed to 20 kgs on the Wings air too.
- Garuda and Citilink flights Jakarta are operated from the terminal 3 which is also the international terminal. Other airlines are in terminals 1 & 2 reachable by a free shuttle (20 minutes).



CONTACTS



Cruise Director +62 821 99 15 21 76

Olivier +62 821 11 49 95 94

Jérôme +62 812 44 94 20 28

info@wallacea-divecruise.com

www.wallacea-divecruise.com

