



WALLACEA  
DIVE CRUISES

---

MV AMBAI - HALMAHERA  
9 NIGHTS CRUISE



# HALMAHERA

DEPARTURE PORT: TERNATE / ARRIVAL PORT: TERNATE

Halmahera is one of the best Indonesian dive destination.

It offers a great variety of dive sites among beautiful islands still largely covered with tropical forests.

This 10 days / 9 nights trip visits the West and South West part of Halmahera, starting from the volcanic island of Ternate and going until the South of Bacan island before to go back to Ternate. On this program the crossings are short and limited compared to most of our other itineraries.

Our adventure will begin in Ternate where you are awaited on our vessel before 12 noon, and will end up in Ternate as well, where you can disembark from 6am to 12 noon . We organize your pick up and drop off in the morning at the airport or at your hotel.







## THE DIVING:

Many of the dive sites are sea mounts with a rocky substrate and plenty of large soft coral covered boomies in all different colors.

The fish life is intense: as an Halmahera signature, black tip sharks are seen patrolling around on most of the dives.

Tunas, Spanish mackerel, giant trevallies and other pelagic fish are part of the show. Napoleon wrasses, bump-head parrotfish, groupers, schools of surgeon and spadefish are also well represented.

Other type of dive site includes great critters dives and beautiful fringing reefs.

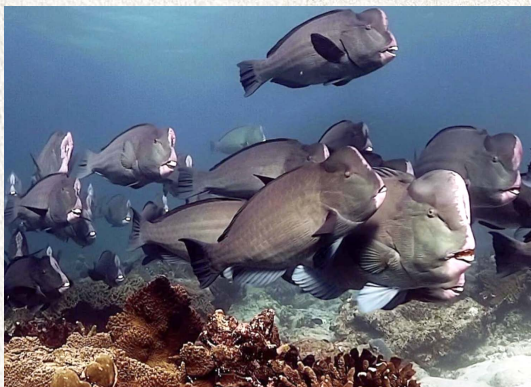
A minimum of 27 dives (3 dives per day) is offered during the trip, including at least 5 night dives.

The last dive is the Penultimate day at 8 am.



## SNORKELING:

Our trips are open to snorkelers. Most of the dive sites offer great snorkeling opportunities with a lot to see in shallow waters, and we offer specific guidance for snorkelers.





## ACTIVITIES:

Besides the diving, we offer some activities along the trip according to weather conditions and the final trip itinerary.

Halmahera and its satellites islands are truly beautiful. Ternate, Tidore, Moti, Makian are all volcanic, cone-shaped islands. They were part of the spices trade during the XV century. Some fortification remain and we will pay a short visit to some of them.

In Bacan, an afternoon excursion is on the program to visit the village and fort of Labuan as well as a short trip into the forest to admire a great variety of butterflies.

You can also ask a boatman to bring you a shore at any time, as long as the schedule allows it. Our four complementary kayaks and paddles are also available to go on shore or in the lagoons whenever the boat is anchored.

All these activities are subject to weather conditions as well as the planned daily schedule and itinerary.







## WEATHER

The weather is variable, with some sunny days and a few showers. The sea is generally calm, with eventually a bit of wind under the showers. Temperatures are around 27-30 °C.

## VISIBILITY

Generally very good with a blue clear water, it can be reduced in case of heavy rainfalls.

## TEMPERATURE

The sea water temperature is between 27° and 30°C (80°-84°C).

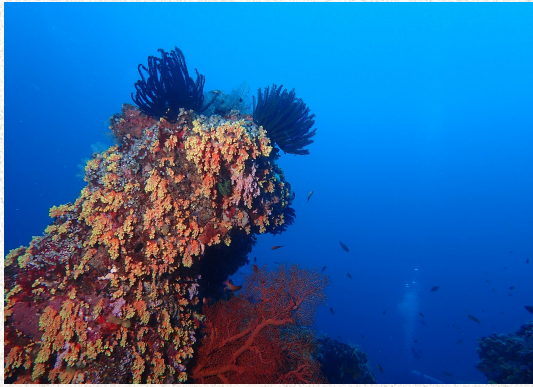
## CURRENTS

Some of the dives can have consistent currents. However Wallacea Dive Cruises has a long experience diving these sites and we pay close attention to diving in the right places at the right time, to avoid difficult or dangerous currents.

Before each dive, our guides conduct current checks so that our briefings will always inform you about the up-to-the-minute diving conditions. If the currents are too strong on a site, we wait or shift to an alternative dive site.







## ITINERARY & NAVIGATION :

The map shows the general cruise itinerary. It can slightly vary depending on weather conditions, currents, visibility, and tides. Crossings are not long and consist in a few hours between dives or at night.

Starting from Ternate we will head south after our check dive, passing near the islands of Tidore, Moti, Makian, all of which are spectacular cone-shaped volcanic islands. After a first night we will dive for 2 days in the area of Goroaici islands. Sea-mounts and rocky islets form the dive sites, attracting a great marine life.



Going South we will reach the north part of the Sapiente strait between Halmahera and Bacan island. The 2 islands of Saleh and Kusu plus some other smaller ones partially close the strait, forcing the water between the islands with currents bringing a lot of life.

Many dive sites in this area, including sea mounts, rocks, drift dives along fringing reefs and quiet critter dives in bays. We spend 2 days in this area.

We keep going South and dive around the small islands of Pigajara, then turn around the south of Bacan islands where some great wall diving awaits us. Going North West of Bacan island, the next stop is Labua for some famous critter dives an excursion on land.



From there we go back to Goroaici area for one day of diving. We then head back to Ternate with one stop on the way for a fort visit.









## DIVE ORGANISATION ON MV AMBAI

- Due to the large number of dives performed during the trip and the remoteness of the location, we urge divers to stay within no-deco limits, to not exceed a maximum depth of 35 meters, and to perform a safety stop at the end of every dive.
  - Depending on the guests' dive experience, interests (photography, macro, etc), and use of Nitrox (free for certified divers), the Cruise Director will arrange the diving groups. These groups are made of up to four divers maximum and a dive guide. The dive guides are rotating on a daily basis. Each diver is given a dive tank (DIN & INT available, no need for adapters) and their own dive station for the duration of the cruise.
  - A briefing will be conducted by the Cruise Director or one of the guides before each dive. It will describe the site topography, depths, currents, and potential hazards, as well as the marine life we expect to encounter.
  - The staff carries your tank between the MV Ambai and the dinghies. Onboard the dinghies, the tanks are placed into slots and the guide will help you to gear up just before you back-roll into the water.
  - Identification books of flora and local fauna are available on board, and the dive guides will always help you identify the animals you have seen during the dives.
  - Some dive equipment are available for rent on board. However, all sizes are not necessarily available, so please book it prior to the cruise.
- \* Our cruises are open to divers with a Padi Advanced Open Water or equivalent with at least 30 logged dives. Less experienced divers can also participate with special supervision that needs to be arranged before the cruise.
- \* Insurance covering medical evacuation and diving accidents is highly recommended. Divers will be filling out a statement of medical fitness for dive activities onboard.







## THE BOAT:

MV Ambai is an ironwood boat of 32m x 7.5m custom-built in 2012, for smooth navigation with focus on spaciousness and convenience for diving activities. With its 3 fiberglass dinghies, comfortable dive deck and camera room, the boat is suitable for avid and pro divers, UW photographers & videographers. Kayaks, paddle board and waterski are also available onboard.

## THE CABINS:

There are 8 comfortable cabins onboard, all equipped with individually-controlled air-conditioning. Each cabin has a private bathroom with hot shower and ample storage for personal belongings. Every bathroom has a separate toilet and shower, with ample water pressure for everyone!

There are 2 sea view cabins with double bed (upper deck 10 m<sup>2</sup>), 4 cabins with double bed and a single bunk bed (double/ twin bed, lower deck 12 m<sup>2</sup>), and 2 cabins with twin bunk beds (lower deck, 10 m<sup>2</sup>).

## COMMON AREAS:

MV Ambai is designed to make guests comfortable during long trips with 2 outdoor lounges, one on the main deck and one on the upper deck. There is plenty of space where guests can mingle and socialize under the shade, but also enough space for them to relax on their own to read their books or take a nap outdoor.

There is a smoking area at the back of the upper deck where guests can also get to know the crew.

The air-conditioned restaurant on the main deck also serves as the place to brief divers before each dive and is equipped with a TV in the middle of the room. The restaurant includes a bar.







## SERVICE:

Behind the MV Ambai's success, there is a professional, discreet, smiling, and very friendly crew. Our team will treat you with special attention, assist you with whatever you need, and of course carry your tank & gear. Most of our crew have been working with us for many years.

## THE CUISINE:

Mixing eastern and western specialties, our cuisine is a "fusion" of the best of both that will never let you go hungry. Should you have specific requests, or a particular dietary need, (vegetarian or allergy, for example), our chefs will adapt the meals for your greatest pleasure.

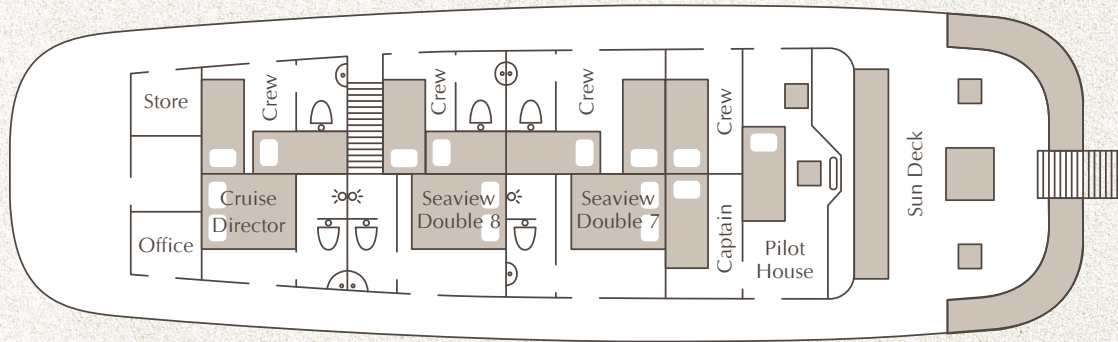
## THE TEAM AT YOUR SERVICE:

- 1 cruise director / diving instructor
- 17 crew members including 4 dive guides

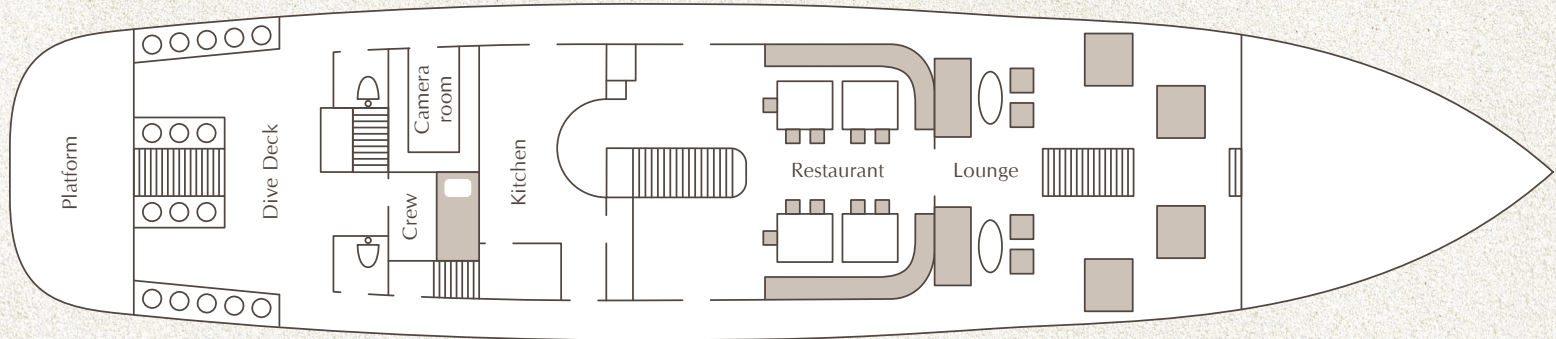




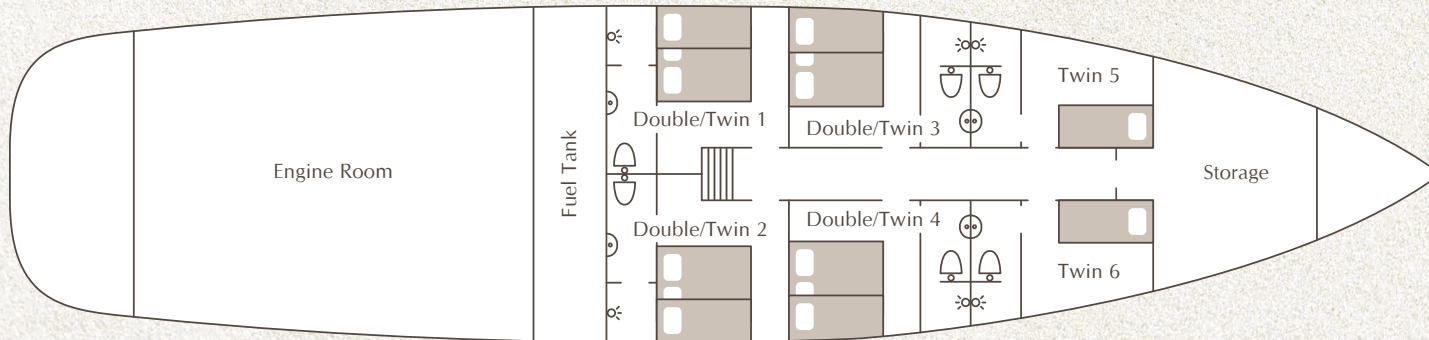
UPPER DECK



MAIN DECK



LOWER DECK





## THE CRUISE RATE INCLUDES:

- Transfers between the boat and the closest airport
- Accommodation in a shared twin or double bed cabin
- All meals & snacks, drinking water, soft drinks and hot drinks
- All guided dives (1 guide /4 divers maximum)
- Aluminium tank (12 liters), weights, and belts
- Free Nitrox

## PAYMENTS ON BOARD:

All payments on board have to be done in cash, we cannot receive payment by credit card. All major currencies are accepted (€, USD, AUS, CHF, IDR). However, prepayment by wire transfer can be arranged. Please see hereunder what you are mandatory to pay on board and eventual extra costs.

- Parc and port fees: 150€ / pax
- Fuel surcharge: 100€ / pax
- Tips: tipping should reflect your level of satisfaction with the service on board. The usual amount in the industry is 10% or more of the cruise rate.

## EXTRAS PRICE LIST:

- Beer 33 cl 4€
- Laundry 1€ / pc
- Massage (45 mn) 30€
- Wines & Spirits 40€ to 60€ / bottle

## DOESN'T INCLUDE:

- Park & port fees, fuel surcharge.
- International and domestic flights
- Alcoholic beverages (you can bring your own)
- Diving equipment rental; 100 cf (15 L) tank (see price list)
- Crew gratuities
- Massages
- Laundry

## DIVING EQUIPMENT RENTAL:

- Regulator, BCD, Dive computer 10€ / day each item
- Fins, Diving Mask 5€ / day each item
- Surcharge for 100cf / 15 lt tank 75€
- Wetsuit 10€ / day
- Torch 8€ / day







## VISAS & USEFUL INFORMATION

Most countries are eligible for a 30 days visa on arrival (VOA) for IDR 500 000 (or the equivalent in € or USD) payable in cash at the airport. This visa can be extended once inside the country for an additional 30 days. You can pre-register and pay online beforehand to avoid waiting on arrival. List of countries eligible for VOA & application for VOA registration & payment here:[www.idnonline.vfsevisa.id](http://www.idnonline.vfsevisa.id)

A 60 days visa can be requested, type B211A. Wallacea Dive Cruise can arrange it for you.

**YOUR PASSPORT MUST HAVE A 6 MONTHS VALIDITY AT LEAST FROM THE DATE YOU WILL EXIT INDONESIA.**

- Universal electrical sockets (EU, USA, AUS, UK, CN)
- Camera Room for charging and assembly of cameras and accessory devices with many outlets.
- Towels are provided: bath towel (cleaned and replaced every 3 days) and a “deck/ beach” towel. After each dive a warm towel will be available for each guest on the dive deck. The cabin bathroom is furnished with a hair dryer, organic liquid soap and shampoo as well as toothpaste.
- 4 complimentary Kayaks are available on board.
- WIFI is available on board through our GSM modem. However, depending on the trip area, the GSM coverage may be not permanent.





## PRACTICAL INFORMATION

BOAT DEPARTURE		BOAT ARRIVAL	
<b>Port</b>	Ternate	<b>Port</b>	Ternatet
<b>Airport</b>	Ternate (TTE)	<b>Airport</b>	Ternate (TTE)
<b>Check in time</b>	Before 12:00 noon	<b>Check out time</b>	Before 12:00 noon
<b>Boat departure time</b>	1:00 PM	<b>Boat arrival time</b>	6:00 AM
<b>First dive</b>	No dive on the arrival day	<b>Lats dive</b>	Penultimate day, 8 AM

### How to get there:

To/From Ternate: through Jakarta or Manado, daily direct flights.

NB: See hereunder about airlines and luggage allowance. Domestic flights can be checked and bought on the web site / application [tiket.com](http://tiket.com) or [traveloka.com/en-id](http://traveloka.com/en-id)

### Good to know:

- Most of the airlines include for free 20 kgs of luggage.
- Garuda includes on top of the 20 kgs an additional free 23 kgs for sports equipment, diving gear falling into this category.
- WINGS AIR doesn't include any baggage, the fees vary depending on the flight. However if you are booked with a Batik Air connecting flight, you are allowed to 20 kgs on the Wings air too.
- Garuda and Citilink flights Jakarta are operated from the terminal 3 which is also the international terminal. Other airlines are in terminals 1 & 2 reachable by a free shuttle (20 minutes).






# FLIGHTS

Via Jakarta:

AIRWAYS	JAKARTA-TERNATE	RATE	TERNATE-JAKARTA	RATE	LUGGAGE
Garuda Indonesia 	01:35 - 07:20	€225	08:05 - 09:40	€215	20 + 23 KGS

Via Manado:

AIRWAYS	MANADO-TERNATE	RATE	TERNATE- MANADO	RATE	LUGGAGE
	06:40 - 08:05	€90	13:05 - 13:15	€90	Add 33 €/ 20 kgs





