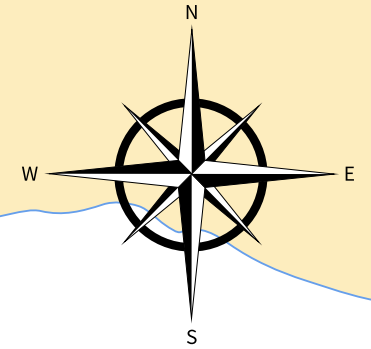




AMBON TO AMBON THE SPICE ROUTE

10 DAY 9 NIGHTS - DIVING & DISCOVERY CRUISE



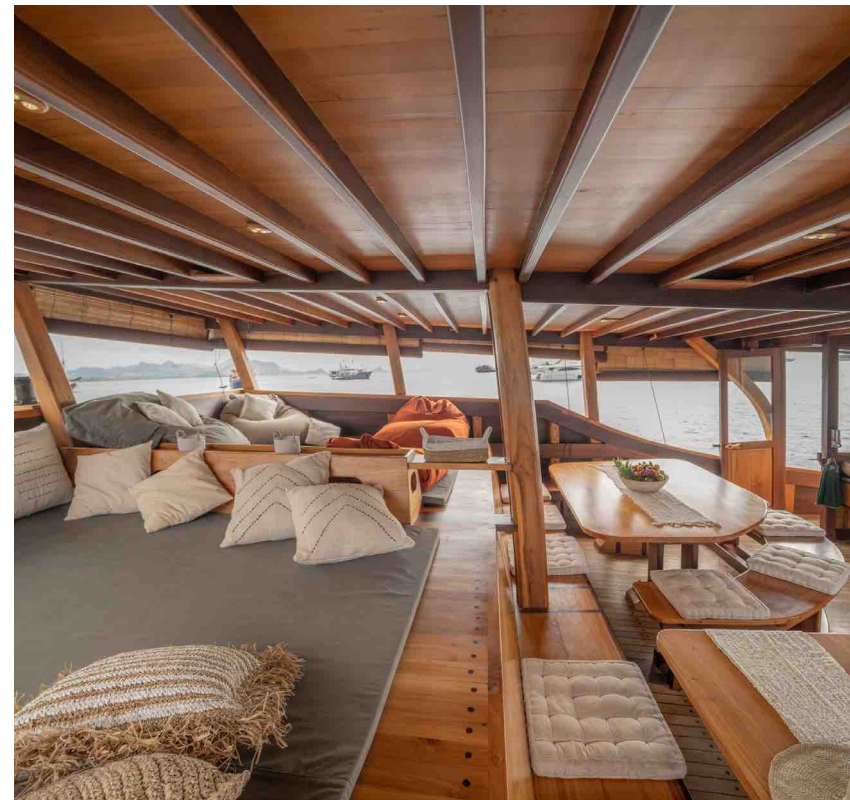
ANCHORAGE

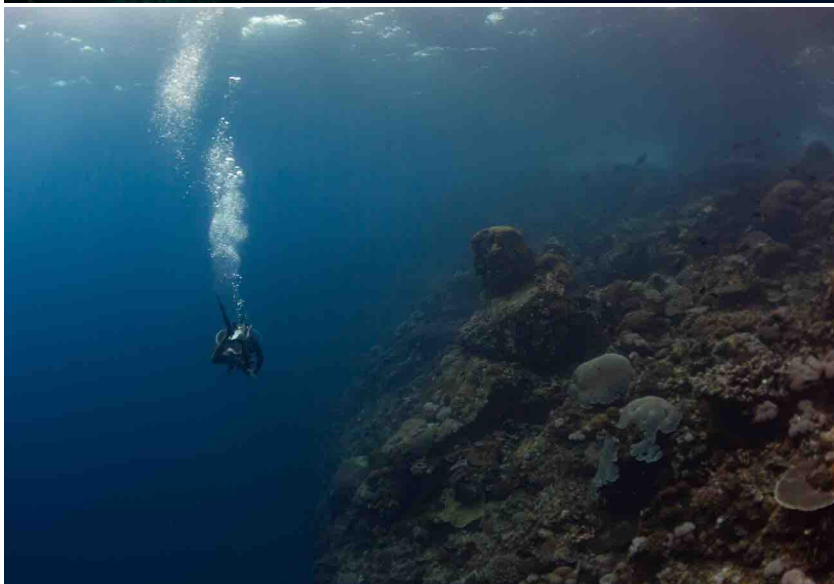
- | | |
|-------------------|-------------------|
| 1. Ambon | 5. Manuk Island |
| 2. Nusa Laut | 6. Banda Naira |
| 3. Suanggi Island | 7. Suanggi Island |
| 4. Banda Islands | |

DAY 1

ARRIVAL - AMBON

Pick up the guests at Ambon Airport early morning and then boarding Jakare at Teluhu. After introduction to our boat, our crew, safety procedures and presentation of the itinerary Jakare will leave for Nusa Laut and stop over at Pulau Mamala for a check dive/snorkelling. After the check dive Jakare will head East toward Nusa Laut where we will stay overnight.





DAY 2

NUSA LAUT

We will plan three dives out of a reef, either slope or wall diving. Snorkeling sessions are also amazing there with healthy reefs full of life. After the dives and snorkeling sessions, Jakare will sail overnight southward, toward Pulau Suanggi.

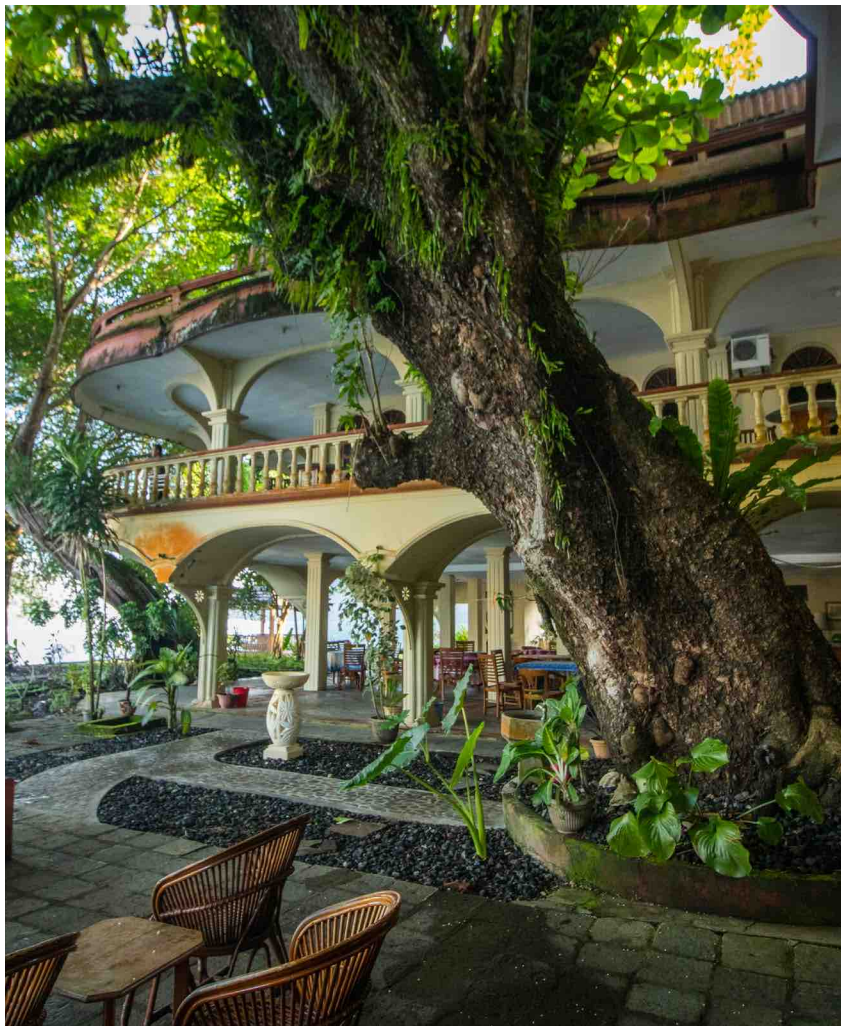


DAY 3

PULAU SUANGGI

Jakare will arrive in Suanggi early morning. We are planning 3 dives there on slopes and pinnacles and hope to encounter Hammerhead sharks. Latest by mid-afternoon, Jakare will sail to Banda Neira to arrive at sunset in this beautiful harbour. Overnight in Banda Neira Harbour.





DAY 4, 5 & 6

BANDA ISLANDS

This group of islands around Banda Neira is famous for its history (famous for being the only place where Nutmeg grew) and also its spectacular and exceptional diving. The three days stay around Banda Island will be dedicated to visit historical places (museum and fort) and dive various exceptional dive sites including in Banda Neira (lava Flow & Batu Kapal) Pulau Hatta (Karang Hata, Tanjung Buton, the Wall) and Pulau Run. Sea life is abundant there and the chances of encountering large pelagic are high, including the famous schools of Hammerhead sharks, mobula rays, dog tooth tunas and enormous schools of fusiliers. We will also show you the famous mandarin fish and other small critters in the port of Banda.

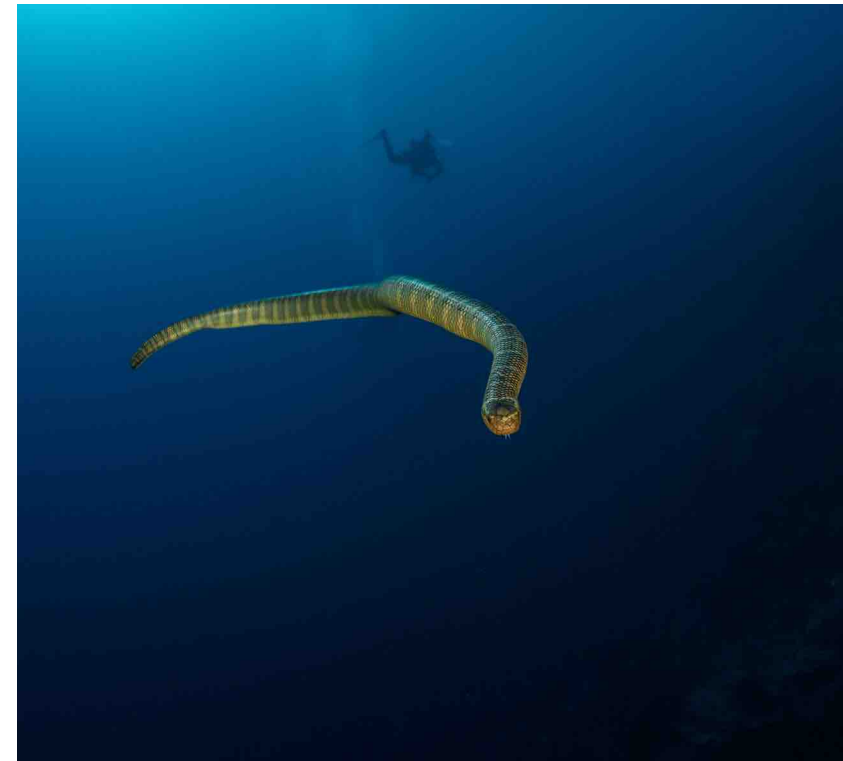
At day 6, after the exploration of Banda Island and diving in Pulau Hatta, we will sail overnight to Pulau Manuk (weather permitting).

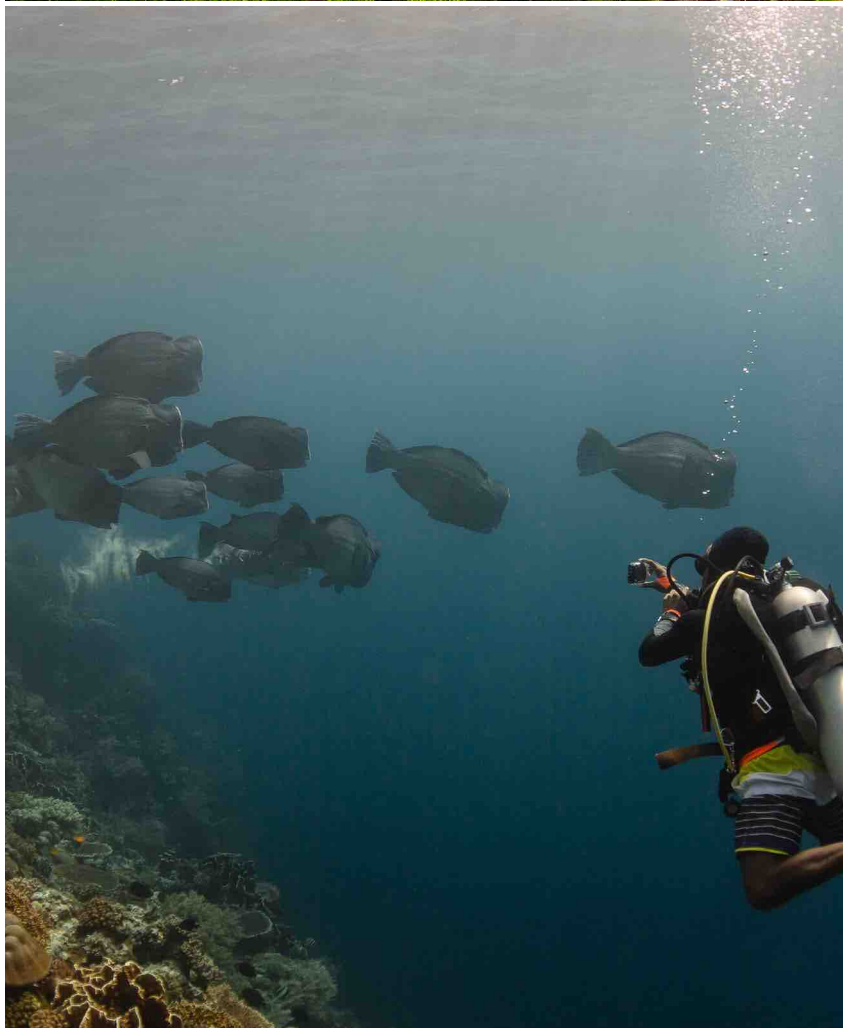


DAY 7

PULAU MANUK

Jakare will arrive in Manuk early morning. The Island is located approximately 60 NM South from Pulau Hatta, right in the middle of the Band Sea. We are planning 3 dives there mainly on pinnacles and hope to encounter Hammerhead sharks and other great pelagic. By late-afternoon, Jakare will sail overnight back to Banda Neira to arrive at sunrise. Overnight at Banda Neira or other place depending on the weather (weather permitting, Jakare will stay overnight at Pulau Manuk).





DAY 8

BANDA NEIRA

Day 8 will be an occasion to return to Banda Neira and explore additional dive sites or enjoy again the best of the diving sites around the islands (alternately more diving will be proposed at Pulau Manuk and Pulau Hatta).



DAY 9

PULAU SUANGGI

Arriving early at Pulau Suangi, from Banda Neira, we will propose another day exploring this exceptional dive site allowing more chances to encounter the Hammerheads. 2 or 3 dives will be proposed at pinnacles or slopes. Jakare will then leave for Ambon by early evening. Overnight sailing to Ambon.



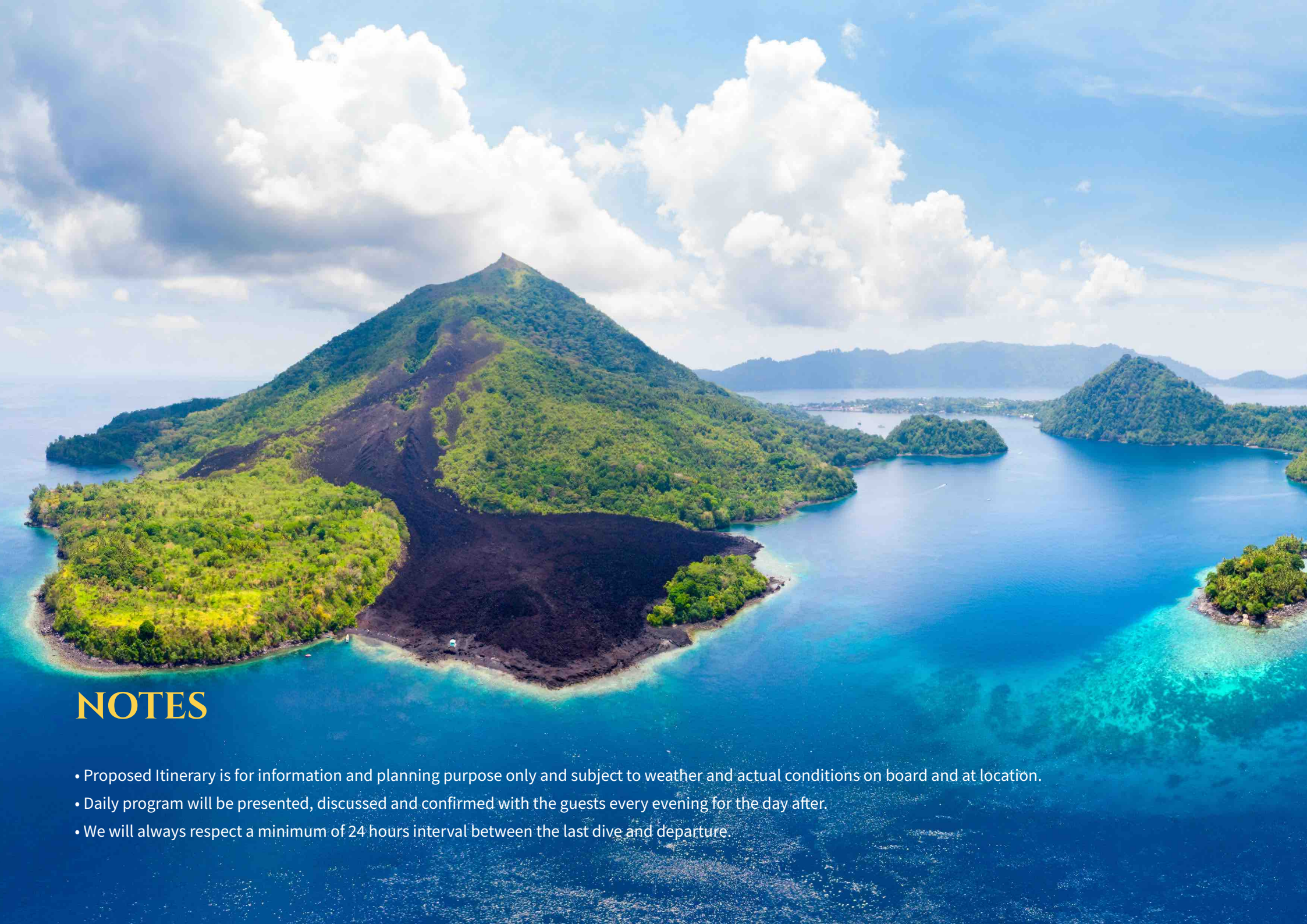


DAY 10

AMBON

The last day will be dedicated to travel back to Ambon (mainly overnight) and get ready for the end of the cruise. Arrival by mid-day. Filling the diving log books, stamping the logbook by the Diving Instructor / dive master and exchanging addresses and photos from the wonderful time spent together. A small ceremony will be organized on board the Jakare before leaving the boat to the airport or hotel.





NOTES

- Proposed Itinerary is for information and planning purpose only and subject to weather and actual conditions on board and at location.
- Daily program will be presented, discussed and confirmed with the guests every evening for the day after.
- We will always respect a minimum of 24 hours interval between the last dive and departure.



Jakaré LIVEABOARD